

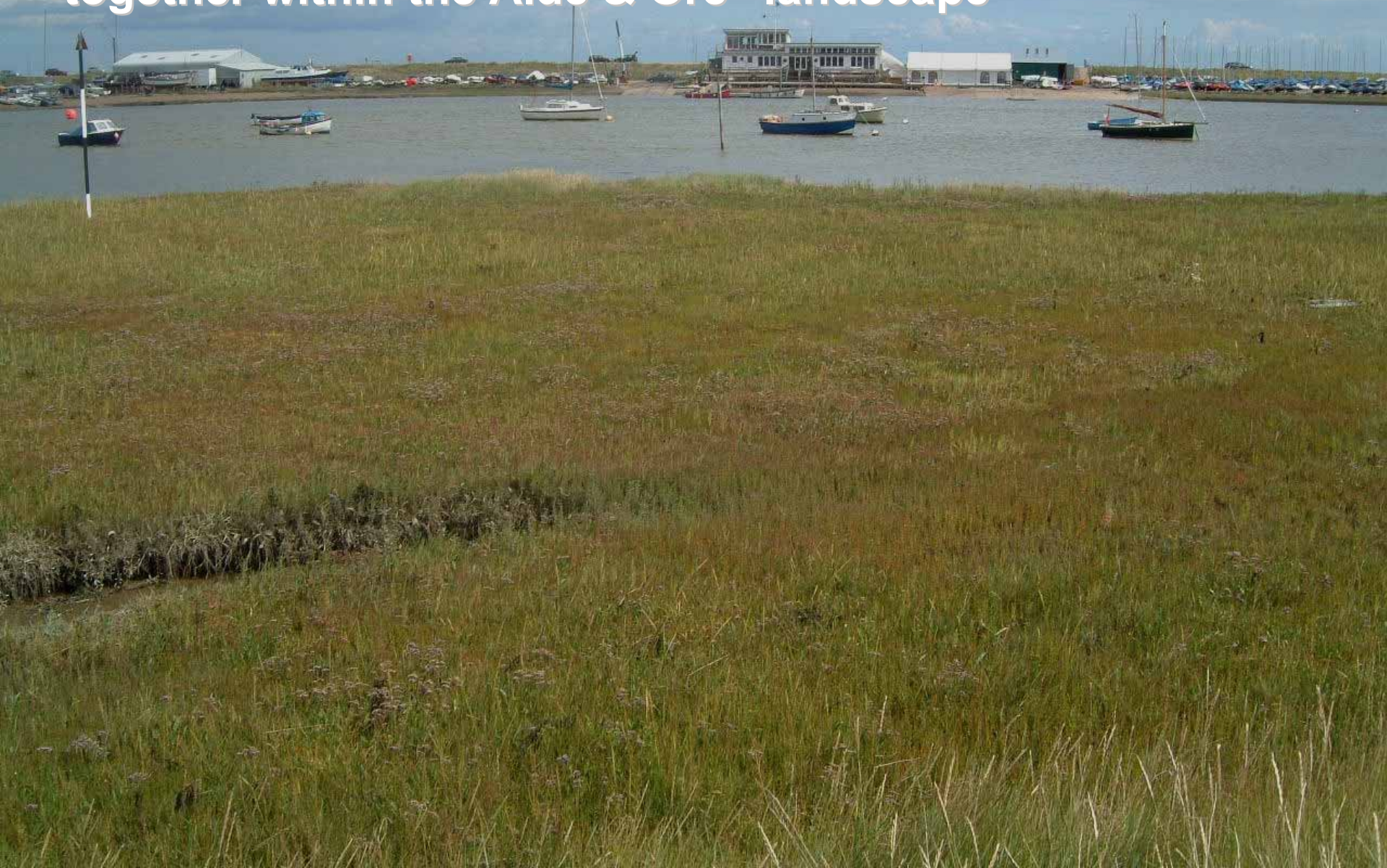
# The Alde & Ore

An 'ore'inspiring landscape.....

**Nick Collinson**  
**AONB Manager**



All the topic areas we've discussed today fit together within the Alde & Ore "landscape"



## So, what is Landscape?

- Landscape 'records' our footprint on the natural environment – its much more than just the natural environment
- The way we have shaped and used the land around us creates a landscape that expresses the natural environment, as well as our culture, the economy and our history



A vast flock of seabirds, likely Knots, is captured in flight over a deep blue ocean. The birds are densely packed, filling most of the frame with their white bodies and dark wings. The water below shows gentle ripples. In the upper left, a portion of a white boat with an orange buoy is visible. The overall scene conveys a sense of intense natural activity and a rich, wild landscape.

**A landscape rich in spectacular wildlife**

***A flock of Knots - Steve Plume***

**A landscape of commercial activity, large and small**



**A landscape of beauty and tranquillity**



***Boyton marshes***

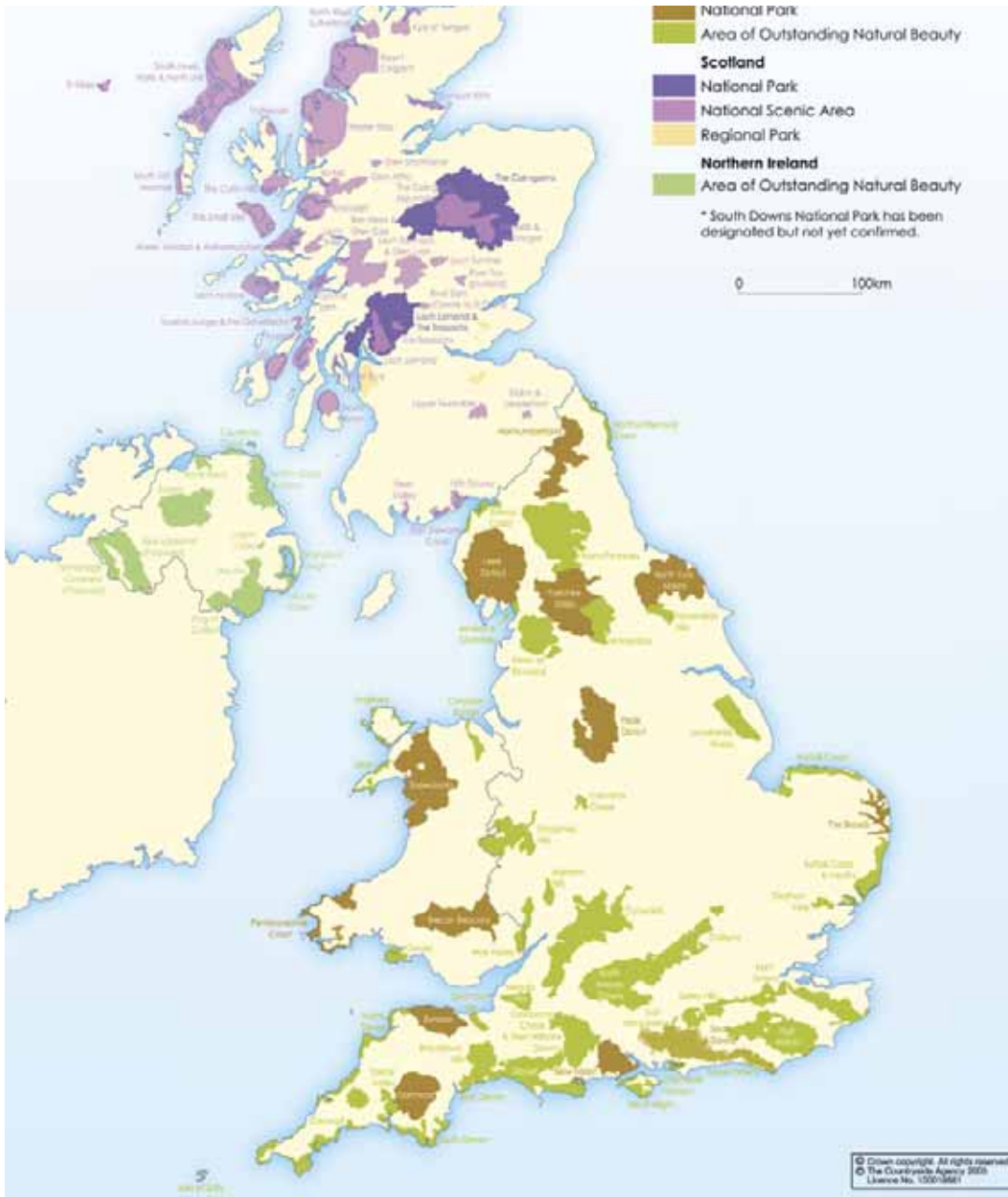
A landscape delivering  
a high demand for  
recreation, on and off  
the water



A landscape that changes and will continue to do so..... and that tells stories of our past



# All this going on in a landscape that is protected



Part of a family of protected landscapes

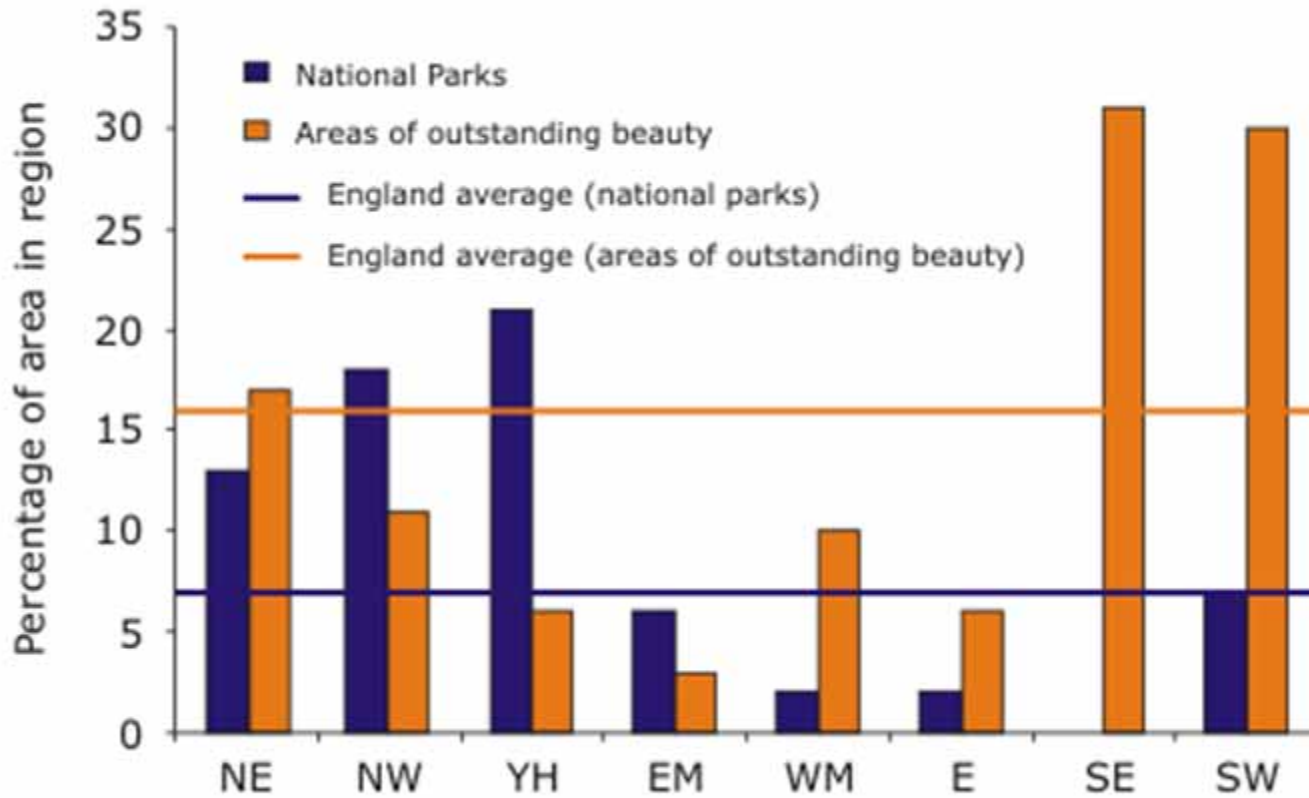
All came from 1949 National Parks and Access to the Countryside Act.

Protection for AONBs strengthened in CRoW Act 2000

47 AONBs & 12 NPs in England, Wales & Northern Ireland



# The importance of protected landscapes in the East of England





*International Union for Conservation of Nature  
(World Conservation Union)*

*IUCN PROTECTED AREA CATEGORY*

*CATEGORY V - PROTECTED LANDSCAPE*



*A protected area where the interaction of people and nature over time has produced an area of distinct character with significant, ecological, biological, cultural and scenic value: and where safeguarding the integrity of this interaction is vital to protecting and sustaining the area and its associated nature conservation and other values.*

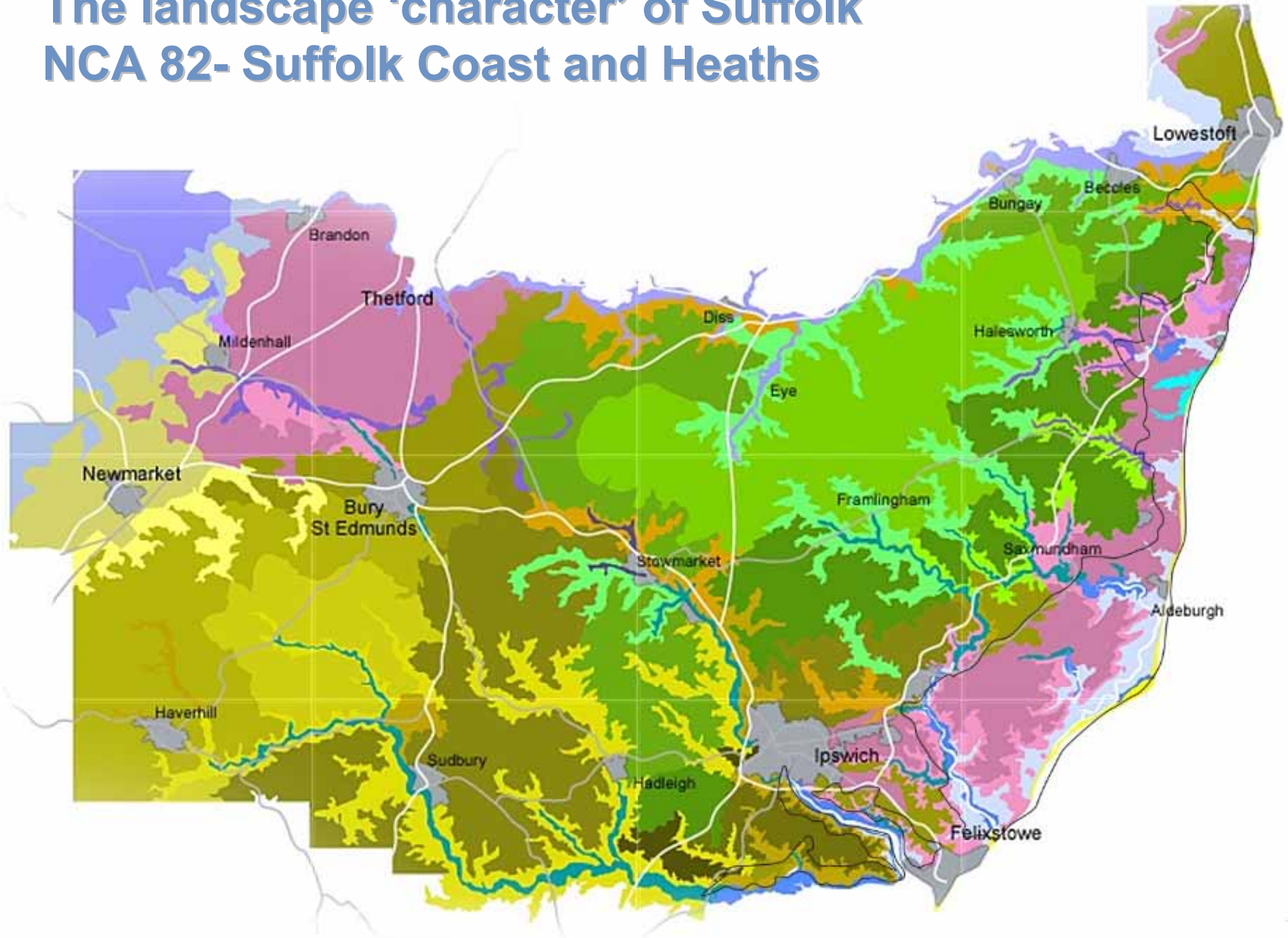
## How we assess landscape

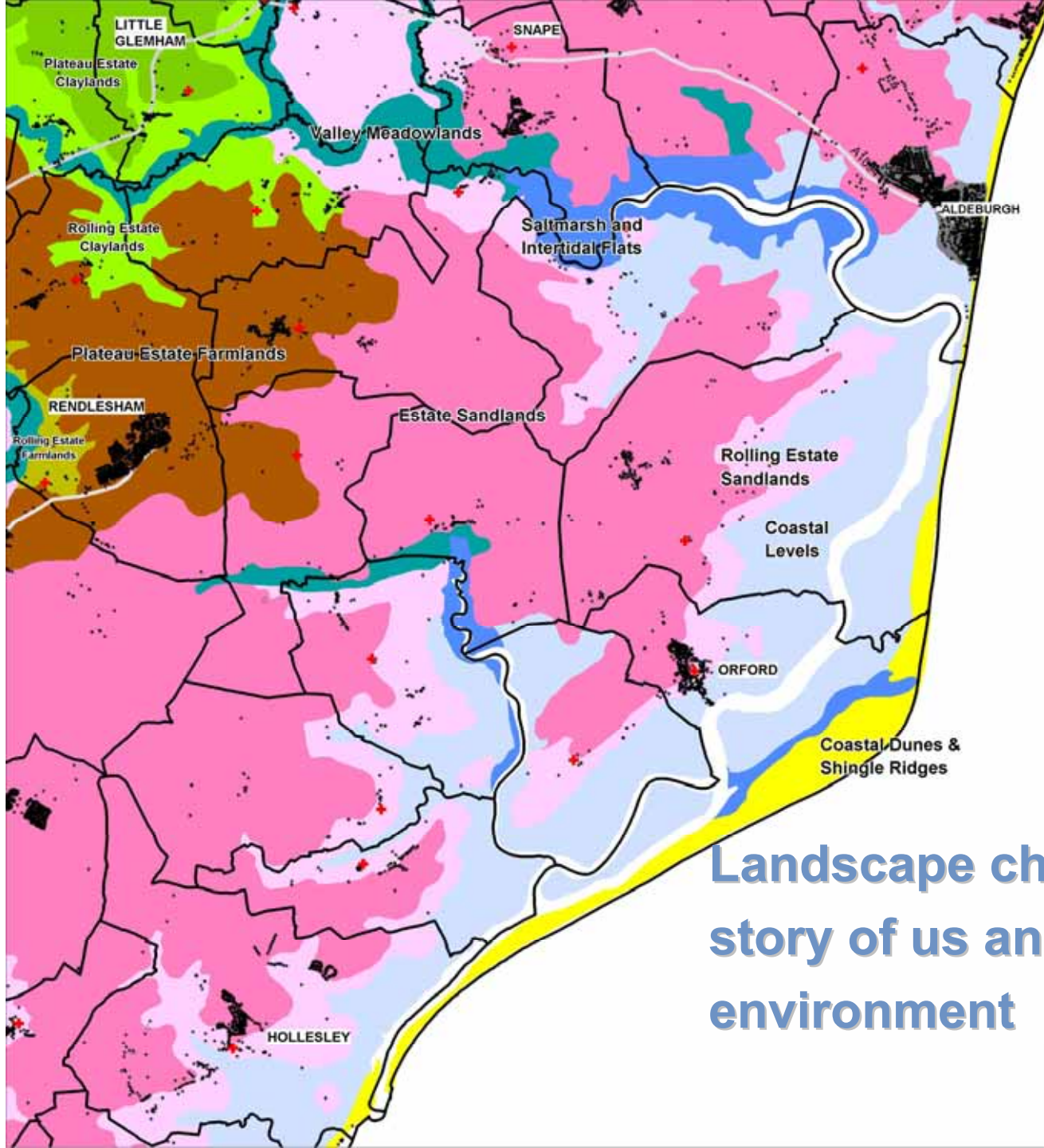
### Landscape Character Assessment → 1990s

- Method to assess what makes one landscape different from another, what gives an area its 'sense of place'
- Came from concern about all landscapes being considered the same ref. decision making
- Uses info. on landform, land cover, settlements, soils
- Field-checked to assess dominant features
- Informs decisions about landuse change

# The landscape 'character' of Suffolk

## NCA 82- Suffolk Coast and Heaths





**Landscape character – a story of us and our environment**

# Why does landscape matter?

## Values & values.....

### Cultural value (AONB legal protection)

- Provides a history of our relationship with the land
- It provides a “sense of place”, a place to relax & unwind, a place for wildlife
- Strong sense of public ownership & connection

### Economic value

- Landscape & cultural values strongly linked to economy
- Tourism value, to SCH AONB - £166 million/yr

This is a special landscape, it's a jewel nationally and locally. There are clearly some challenges ahead as the landscape continues to change....

[www.suffolkcoastandheaths.org](http://www.suffolkcoastandheaths.org)



**Suffolk Coast and Heaths** - Area of Outstanding Natural Beauty