

**WE'LL TAKE YOUR BULKY ITEMS**

Call 01394 444000 to have your fridge, oven, furniture or other bulky items collected for a small charge.



## GREEN FINGERS WELCOME BROWN BINS

Suffolk Coastal's delivery of over 20,000 brown wheelie bins across the district should be the perfect boost to any gardener who wants to be as green as their garden.

From April nearly every home in the district with a garden can take part in Suffolk Coastal's fortnightly collection of garden waste.

"Thanks to a DEFRA grant, we can make our hugely successful and popular Coastal Ploughback a districtwide scheme. It is a vital part of an initiative across the county to divert waste away from landfill and convert it to a useful

product," said Councillor Andrew Nunn, Cabinet Member for the Environment.

Since April 2004, about 31,000 homes have been linked to Coastal Ploughback and over 6,000 tonnes of garden waste collected as residents got into the recycling habit.

Another option is to buy a home composter available from as little as £5 by calling 0845 077 0759. If you do not want to get into the recycling habit call Suffolk Coastal Services on 01394 444000 and arrange for the wheeled bin to be removed.



## BLOWING IN TUNE

Steve Lovett and daughter Cheryl were just two of the hundreds of people who took part in Suffolk Coastal in Concert. See the back page for full details.



## AIR YOUR VIEWS ON WIND FARM PLANS

Suffolk Coastal is urging people to visit its website to see for themselves the full details of a proposed wind farm that is suggested for a disused airfield near Great Glemham.

As CoastLine went to print, Saxon Windpower Ltd was due to submit to Suffolk Coastal its formal planning application for the construction of wind turbines at the former Parham Airfield.

There have been public discussions about this proposed wind farm for nearly two years but at long last everyone will now be able to see exactly what is being proposed and the case being put forward by the applicants.

Any resident wanting to make comments on the application can visit the Council's website [www.suffolkcoastal.gov.uk/planning/windfarm/html](http://www.suffolkcoastal.gov.uk/planning/windfarm/html)

## THE 'COASTAL CARD' IS ON ITS WAY



From Friday, June 3 there will be a great new incentive to make use of one of the Council-owned leisure centres with the launch of

a new discount card that can save you pounds.

coastal card will offer Suffolk Coastal residents a 20 per cent discount on the vast majority of available services at each of our leisure centres as well as priority booking terms for some sessions such as badminton and squash courts.

coastal card is a partnership between the Council and Suffolk Coastal Leisure Community Association Ltd, the local branch of DC Leisure who manage our sports centres.

The card will cost £10 for adults and £5 for senior citizens, under 19s, disabled people and other concessionary groups, but should

**INSIDE YOUR COASTLINE**

Suffolk Coastal's Performance Report - a four page feature on our achievements and future goals  
Starts on page 7

Grants for improving the district  
See page 3

Our new budget  
See page 6

Our safe district  
See page 12

Planning Felixstowe's future  
See page 13

The new Licensing Act explained  
See page 14

Protecting our coastline  
See page 15

**COASTLINE**

CoastLine is also available in large print or on audio tape for blind or partially-sighted residents. Call 01394 444345.

# BACKING FOR HEALTH CENTRE

Members of Suffolk Coastal's Cabinet have met with local health chiefs to see if a way can be found to rescue a proposed one-stop health centre in Saxmundham. They were assured that the door was not closed but the project now remains on a waiting list.

Councillors Colin Hart, Patricia O'Brien and Chris Slemmings wrote to Tony Robinson, Chairman of the Suffolk Coastal Primary Care Trust (PCT) asking to 'explore any means by which we could assist in helping move this imaginative project forward to a successful conclusion for the benefit of the communities we both serve'.

In December, it was announced that the Saxmundham health and social centre would miss out on a share of £1 million Government funding for new health facilities in the east of Suffolk. The centre had planning permission from the Council and was to include a birthing unit, an NHS dentist, an ambulance centre, social care for

the elderly, a children's centre and crèche.

At the meeting, Suffolk Coastal's Cabinet members expressed their concern and championed the need for the centre.

"There is clearly strong public demand for this innovative and visionary project which meets a number of significant NHS targets, will help reduce deprivation in an area where income is among the poorest 20 per cent in the county (the worst in Suffolk Coastal), and will bring a broad range of high quality health and social care services to local people in both an expanding market town and in remote rural areas," stated the letter signed by Cllrs O'Brien, Hart and Slemmings.

The team behind the proposals has argued that the new centre would fulfil the demands of the NHS modernisation agenda and provide services for people in both Saxmundham itself and the surrounding rural villages.

# WICKHAM MARKET GETS ACTIVE THIS EASTER

Suffolk Coastal's Active Leisure team is bringing to Wickham Market this Easter its popular mix of sport and leisure activities for children to enjoy.

There will be lots to do, from playing football, rounders, golf and basketball to making pictures, cushions, puppets and you can even have your face painted.

This Easter treat has been made possible thanks to the support of a grant from the Wickham Market

Partnership's Community Chest, and is aimed at children of all ages, with sessions costing no more than £1.

So if you are at a loose end during the Easter holidays, contact Sarah Shinnie – Leisure Development Officer on 01394 444652 to find out what's going on.

There are also a host of activities on offer at the Council's leisure centres this Easter - pop in to find out more.

# CAROL IS LEADING THE RIGHT WAY



Carol at one of our rights of way

Suffolk Coastal's Carol Ramsden has gained a prize from the Institute of Public Rights of Way Officers (IPROW) as a recognition of her contributions to her profession.

Carol recently achieved an MSc degree with distinction in Public Rights of Way and Countryside Access Management, and her dissertation earned top marks and earned her the award from IPROW.

"Carol has worked hard for this degree in her own time and it is

good to see her efforts being reflected in the high quality of the degree she has earned, and the additional recognition of her colleagues from across the country," said Councillor Rhona Sturrock, Chairman of the Rights of Way Committee.

There are some 1,400 kilometres of public rights of way in Suffolk Coastal, including footpaths, bridleways, roads used as a public path, and byways open to all traffic. Suffolk Coastal has powers to make public path orders to close or divert footpaths and bridleways, or indeed create new ones.

"As a large rural district we are concerned to exercise our public path order powers in a way which recognises the balance between the needs of the public to have access to all parts of our countryside, the needs of landowners to manage their land effectively, and the protection of that same glorious environment," added Cllr Sturrock.

 <b>Suffolk Coastal - how to contact us</b>			
<b>General Enquiries</b>	<b>01394 383789</b>	<b>Suffolk Coastal Services Ltd (SCS)</b>	<b>01394 444000</b>
<b>Office Hours</b>	Monday to Thursday 8.45am - 5.15pm Friday 8.45am - 4.45pm	SCS provide the following services: Refuse Collection, Recycling, Street Cleansing, Abandoned Vehicles, Car Parks, Pest Control, Public Conveniences, Coast Protection, Ground Maintenance	
<b>Cash Office</b>	Monday to Thursday 9.00am - 4.30pm Friday 9.00am - 4.00pm	<b>Leisure Centres</b>	North <b>01394 444279</b> South <b>01394 444686</b> Leiston <b>01728 830364</b> Deben Pool <b>01394 384763</b>
<b>Planning Advice</b>		These are managed by Suffolk Coastal Leisure Community Association Limited.	
<b>Council Tax</b>	<b>01394 444855</b>	<b>Tourist Information Centres</b>	Aldeburgh <b>01728 453637</b> Felixstowe <b>01394 276770</b> Woodbridge <b>01394 382240</b>
<b>Housing Benefit</b>	<b>01394 444838</b>		
<b>Business Rates</b>	<b>01394 444544</b>		
<b>Port Health</b>	<b>01394 675369</b>		
<b>Suffolk Coastal District Council,</b> <b>Council Offices, Melton Hill,</b> <b>Woodbridge IP12 1AU</b> Fax: <b>01394 385100</b> Minicom: <b>01394 444211</b> E-mail: <b>scdc@suffolkcoastal.gov.uk</b> Website: <b>www.suffolkcoastal.gov.uk</b> Emergencies outside office hours: <b>01394 383789</b>			
<b>Suffolk Coastal ... where quality of life counts</b> * Suffolk County Council is responsible for Education, Social Services and Highways			

# GROUPS GAIN COUNCIL SUPPORT



St Peter's Church in Sibton

Grants totalling over £50,000 have been agreed by Suffolk Coastal to support groups to provide social or sporting facilities and services to local residents.

"Despite our severe financial pressures we have paid out over £100,000 in grants over the last year and I am pleased that we can be financial partners to so many

groups who are playing such a significant role in our community," said Councillor Colin Hart, Cabinet Member for Grants.

The largest agreed grant is £8,000 to help install heating at St Peter's Church in Sibton, the village's only community hall which has hosted a wide range of events since a Friends group took it over.

Other successful grant applications were:

- £2,500 towards improved toilets and access to the Church Hall of Aldeburgh's St Peter's and St Paul's Church
- £500 for improved access and baby changing facilities at Friston Village Hall
- £5,000 towards an extension to the Gymnastics in Ipswich centre
- £5,078 to support the Doorstep Green to help Hacheston get its own play area and playing field
- £500 to improve car parking at Leiston Guide Hut
- £4,000 towards a disabled toilet and store at Middleton Village Hall
- £2,304 for improvements to the 1st Otley Scout Group Hut
- £1,500 for two new doorways at Westerfield Village Hall
- £2,900 to provide disabled access and improved terracing at Woodbridge Rugby Club
- £1,500 to refurbish and provide disabled access to FADOS (Felixstowe Amateur Dramatic and Operatic Society) House

Three grants were approved conditionally - £7,500 to the children's play area at Melton playing field, £8,000 to Trimley Memorial Hall, and £7,000 for Yoxford Cricket Club pavilion.

Any local group or organisation can apply for a grant by contacting Christine Glocking at Suffolk Coastal on 01394 444320 or email christine.glocking@suffolkcoastal.gov.uk



Snow play with Cllr Clifford Cocker, Chris Walker (Woodbridge town clerk), Woodbridge Mayor Russell Geen and Cllr Maggy Wilson

Kingston Field, Woodbridge has a brand new multiplay unit in the younger children's play area and older children can practice slam dunking on a new, specifically designed basketball area.

Funding for these two projects, which cost nearly £21,000, came from Suffolk Coastal's Outdoor Play Space Fund (OPSF).

"The fund was set up by the Council to ensure that recreation

facilities kept pace with new housing development for the benefit of local communities. Since the fund became available in April 2001 the Council has paid out nearly £47,000 towards the cost of new or improved play facilities," said Councillor Maggy Wilson, Cabinet Member for Community Well-being.

Suffolk Coastal is keen to encourage recreational projects which involve people in their

# PLANNING FOR PLAY



Anyone who would like more information about the OPSF or the OPSPS can call Suffolk Coastal's Joe Liggett on 01394 444318 or email joe.liggett@suffolkcoastal.gov.uk

communities and each year asks parishes to identify their local needs for inclusion in the annual Outdoor Play Space Parish Strategy (OPSPS). This strategy then ensures that funds available are used in the best possible way.

# DON'T FORGET TO VOTE

The pundits are nearly all predicting a General Election on Thursday, May 5, but that date will definitely see Suffolk County Council's elections.

Polling stations across the district will be open on the day, but anyone in the district who is on the electoral roll can apply for a postal vote.

Copies of the application form for a postal vote are available on the Council's website

**www.suffolkcoastal.gov.uk/info/voting.html** or they can be obtained by calling the election team on 01394 444329.

The team must receive completed forms by 5pm on Tuesday, April 26.

## YOUR HELP WILL BRING BETTER BENEFITS

Suffolk Coastal is committed to improving and it is listening to customers of its Benefits Service to see how they can make things even better.

Regular quarterly surveys are now being conducted with users of the Benefits Service and the recently published one for the end of 2004 threw up some interesting results.

"89 per cent of people said the claim form was okay, easy or very easy to fill in. We are going to take a fresh look and see if we can make it even better in time for its next publication but in the meantime anyone who does need help to complete the form should call 01394 444838 and ask for one of the Benefits Officers to visit them," said Councillor Chris Slemmings, Cabinet Member for Housing.

The survey also showed that 92 per cent said the information pack and leaflets were either helpful or



Lucky winner - Shirley of Walton

very helpful, and 83 per cent found the notification letters easy to understand. The Council will now work to make the letters clearer for everyone, but if anyone has a query they can call the Customer Services Team on 01394 444838 who are always pleased to help.

On the time taken to process claims for benefit an encouraging 84 per cent said their claims had been dealt with promptly or very

promptly, and our latest figures show that new claims are dealt with in less than 23 days, which is under the Government's 33 day target.

"Many new claims are processed in less than five working days, and we do give a priority to anyone who may be homeless," added Cllr Slemmings.

The latest quarterly survey is underway, and if you would like to tell the Council about your experience of how its Benefits Service has, or has not, worked please call 01394 444838. There is a quarterly draw for the lucky customer who fills in the short questionnaire – the first winner was Shirley from Walton.

Let us know the good and the not so good, and we will give you the quality service you are entitled to expect from us. Contact 01394 444838.

## INFO AROUND THE CLOCK

Suffolk Coastal's new-look website is set to go live at the end of March after months of preparation to make the site even more customer-friendly.

During the last 12 months a record number of over 700,000 visits have been made but now it should be even easier for people to find what they want on [www.suffolkcoastal.gov.uk](http://www.suffolkcoastal.gov.uk)

More information will be included over the coming year, so watch out for even more reasons to visit your Council 24 hours a day, seven days a week.

• Our sister site [onesuffolk](http://onesuffolk.gov.uk) which can be found by visiting [www.onesuffolk.gov.uk](http://www.onesuffolk.gov.uk) has been created by a Government-funded partnership of Suffolk councils and the police, is also well worth a return visit as it now includes up-to-date traffic news for the whole county.

## PARTNERSHIP HELPED REGENERATE HERITAGE COAST



Part of Leiston's new-look Old Post Office Square

A partnership, which has helped spark spending of over £1.7 million in the district, is about to end after seven years of successfully encouraging social and economic regeneration.

The Single Regeneration Budget's (SRB) 'Regenerating the Heritage Coast' scheme is now drawing to a close, having provided grants to key communities in the Suffolk Coastal area, particularly the market towns of Leiston and Saxmundham.

Suffolk Coastal played a big role in gaining SRB status and £660,000 of funding from the Government, and the scheme has attracted over £1 million of spending to support the regeneration goals of the partners.

Projects were supported that specifically responded to local needs, including a LearnDirect training centre in Leiston, training for small business managers to improve key skills, and funding an outreach worker for the CYDS organisation to support young people.

"We are delighted with the achievements that have been made possible by this scheme and the significant improvements to these two towns," said Councillor John Perry, Cabinet Member for the Economy.

Both towns also gained physical improvements, with Saxmundham

Market Place benefiting from road resurfacing, a better layout to the car park and much-needed pedestrian access.

In Leiston, the Old Post Office Square received a make-over when a new metalwork fence was designed by the Suffolk Coastal's design and conservation manager illustrating the history of Leiston. Road safety was also improved.

The projects made possible by the SRB in this region have proved to be great successes and have enabled further funding to be engaged in work in this area.

The 'Regenerating the Heritage Coast' scheme has boosted the local economy, improved facilities for young people and communities and enhanced the business prospects of this area. The two towns are now looking forward to building on the work done so far as they anticipate a successful and prosperous future.

Among the partners involved during the seven years were Suffolk Coastal District Council, Business Link for Suffolk, Heritage Coast Business Partnership, Otley College, Leiston Town Council, Saxmundham Town Council, Young People Taking Action, British Energy Ltd, Magnox Electric plc, East of England Development Agency, Suffolk County Council and JobCentre Plus.

## HELP GIVE THE DISTRICT A SPRING CLEAN

Suffolk Coastal is ready to help any group that wants to give their area a spring clean this year and join in the annual event that in 2004 attracted over 1,200 people and saw 1,700 sacks filled with rubbish.

Thanks for their efforts last year should go to all the parish and town councils, schools, residents and conservation groups, scouts and boys brigades that took part, and this year we hope more than 52 groups will join in.

Suffolk Coastal can provide gloves and sacks for any groups who want to organise a litter pick at a village green, school grounds, footpaths, open spaces, beaches, minor lanes and roads, and we will also arrange for the disposal of the sacks.

Call Suffolk Coastal Services on 01394 444044 or you can email [daniel.wareing@suffolkcoastal.gov.uk](mailto:daniel.wareing@suffolkcoastal.gov.uk) if you want to help make our district even cleaner this spring.



## Our award-winning team are a cut above the rest

- and now they can help you with your garden



Suffolk Coastal Services Ltd's grounds maintenance team have won the Suffolk groundsmen of the year award three years running and now we can do a 'Groundforce' on your garden. We can do anything from cutting your lawn or trimming your roses, to lopping branches off your favourite trees or a complete redesign of your garden.

To find out more call Tim Collard of Suffolk Coastal Services Ltd on 01394 444003.



# Cut your Council Tax

Find out if you can get a rebate.

### How could I pay less?

Council Tax Benefit could help pay towards some or all of your Council Tax bill, if you are on a low income.

### How is Council Tax Benefit worked out?

Your Council will work out if you qualify for help, taking into account your individual circumstances. This will include your age and whether you live alone.

### What should I do next?

You should apply straight away - Council Tax Benefit is available now.

You can get a claim form from Suffolk Coastal's Customer Services

Melton Hill, Woodbridge (Monday to Friday) 01394 444838

91 Undercliff Road, Felixstowe (Mondays and Wednesdays) 01394 276766

or email the Benefits Service on [benefits@suffolkcoastal.gov.uk](mailto:benefits@suffolkcoastal.gov.uk)

You can also get information about Council Tax Benefit from the Department for Work and Pensions website at [www.dwp.gov.uk](http://www.dwp.gov.uk)

If you apply for Pension Credit you will also get a form to claim Council Tax Benefit with your Pension Credit application

# DELIVERING SUCCESS AND BRIDGING THE GAP

A budget to deliver our plans and policies for the 2005/06 financial year and setting the scene for the following two years, is how Suffolk Coastal's Leader introduced his budget that was approved in February. In a summary of his speech, Councillor Ray

Herring explains below how the budget, which saw a 11 pence a week increase in the local Council Tax for Band D homes, will provide continuing 'value for money' and reflect the views, hopes and aspirations of Suffolk Coastal residents.

Suffolk Coastal is facing both opportunities and threats. Our objective is to provide a balance that takes advantage of economic opportunities and addresses the social challenges of our diverse rural area while at the same time protecting and enhancing our environmental heritage, our countryside, our traditional villages and historic market towns.

I would like to set our £12.8 million budget within the national context. Suffolk Coastal has once again received a Government grant increase below the national average, and one of the lowest in Suffolk – a mere £250,000 extra to help us meet this district's growing needs.

Six years ago, when I became Leader, the Council Taxpayers of Suffolk Coastal, many of them pensioners, were paying less than 37% of this Council's net expenditure with the Government paying 63%.

Our spending has barely changed but slowly, by stealth, the Government share has fallen to 53%, and the local Council Taxpayer share has risen to 47% - an increase of over a quarter at a time when it has been reported that in the North it has fallen to 19%.

On top of this, the Government has continued to give councils more duties – delegating the responsibility but without increasing their grants to meet all the additional costs.

To make up for our unprecedented loss of grant, and the fact that we are not receiving the same amount as some of our neighbouring councils, we have had to make real efficiencies, and transfer these

savings both into improvements in frontline services and to limit the Council Tax increase. This we have achieved. This could be achieved nationally by a Government that also cut waste and transferred these resources into improved services and tax cuts.

We have saved nearly £5 million since 2000, and set out £1.4 million of savings and increased income for 2005/06. But we know that we will have to find another £1.3 million in the following two years.

Streamlined management, business-orientated processes and a customer focus are playing an important part in delivering a more responsive and efficient council, and have worked hard to minimise the impact of our considerable savings on services.

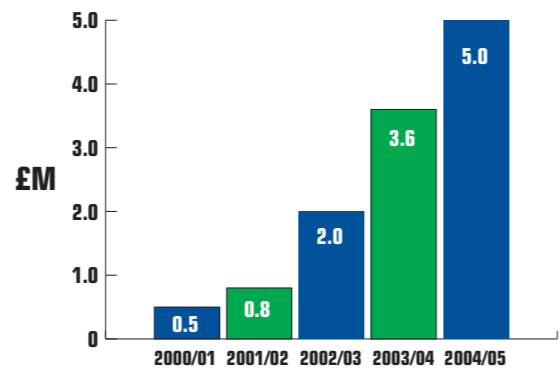
This approach for 2005/06 means we are able to both invest more in services, and set a Council Tax increase of 4.9% keeping within our Medium Term Financial Plan target.

Despite the financial pressures it is still an impressive agenda for change and improvement (you can read more about our plans and achievements on the next four pages).

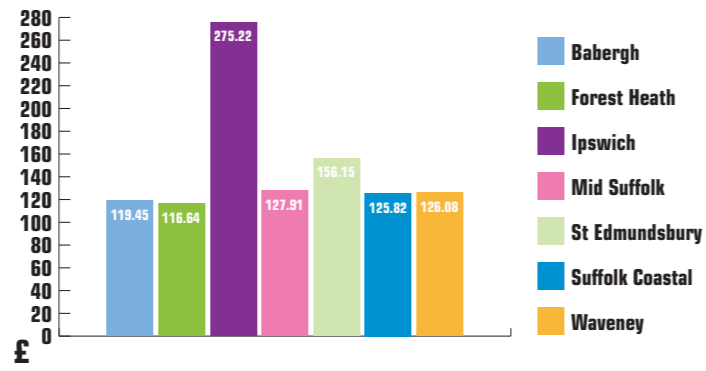
We do not always get everything right and we know we have more to do. We are determined to raise the quality of life in our district, and to make a difference to the lives of those we represent.

The budget, I believe, represents value for money. It makes substantial efficiency savings resulting in both better services and a lower Council Tax.

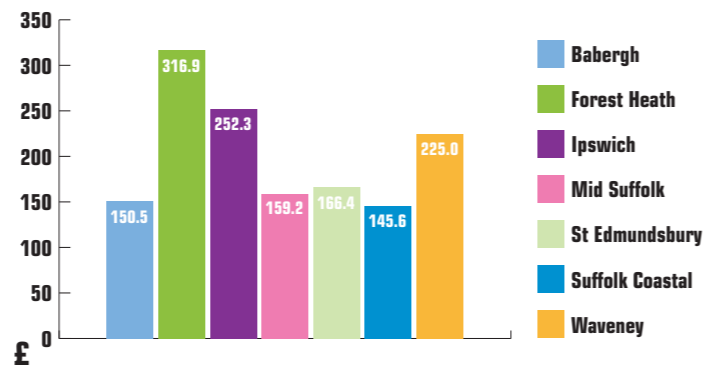
## SUFFOLK COASTAL'S CUMULATIVE SAVINGS & INCOME



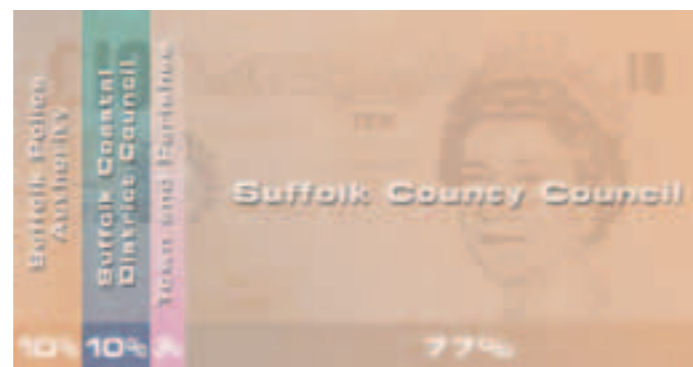
## SUFFOLK'S COUNCIL TAX LEVELS 2005/06



## GOVERNMENT GRANT 2005/06 PER BAND D PROPERTY



## HOW YOUR COUNCIL TAX IS SHARED OUT



Let us know what you think about Suffolk Coastal's budget - email [yoursay@suffolkcoastal.gov.uk](mailto:yoursay@suffolkcoastal.gov.uk) or write to CoastLine at Suffolk Coastal District Council, Melton Hill, Woodbridge IP12 1AU



## DELIVERING SUCCESS

At Suffolk Coastal, we are committed to improving the performance and efficiency of the services that we provide our communities. In the past year we have made several changes that matter in the most effective manner, and we will continue to review the way in which we deliver these services to ensure that we are providing good value for money to all of our residents.

Our overall goal is to make Suffolk Coastal a place where the community continues to enjoy the highest quality of life and receives top quality services from the Council.

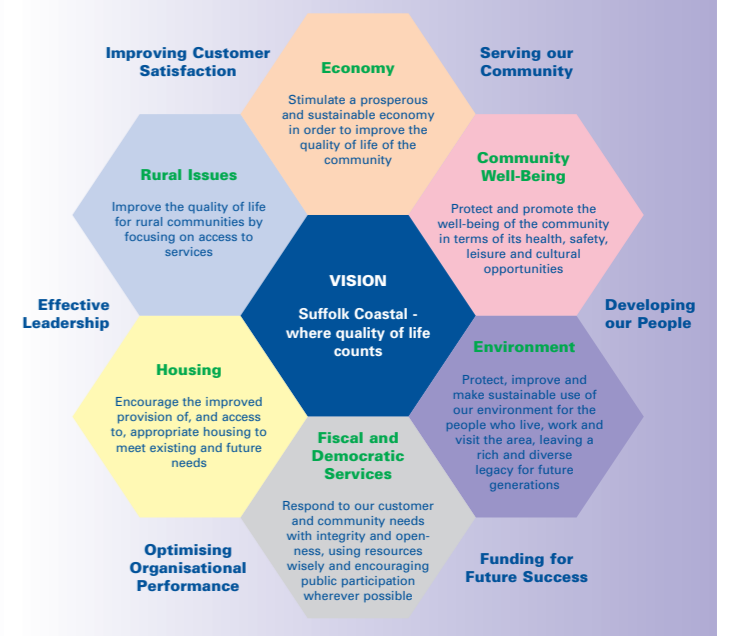
To support this overall goal, six key themes have been chosen to reflect

the needs and aspirations of the district. They are shown in the honeycomb (right) and this makes our 'balanced scorecard', a performance management system that focuses on ensuring that all parts of the Council are working towards delivering our overall goal.

This report is based around these six key themes and looks at what we have achieved during the course of the past year.

The report also provides some indication of some of the improvements we are looking to make during 2005/06 based on both feedback we have received from our residents and the Comprehensive Performance Assessment we received last year.

## Suffolk Coastal's Balanced Scorecard



## FISCAL & DEMOCRATIC SERVICES

### Our objectives

- Respond to our customer and community needs with integrity and openness, using resources wisely and encouraging public participation wherever possible.

### Improvements this year

- Achieved more savings and efficiencies – since April 2000 we have delivered over £4.5 million savings and reinvested over £1.7 million in better services, at a time when external factors forced up our costs by nearly £5 million.
- Jan Ormondroyd was appointed the Council's new chief executive, with a revamped senior management team to see through our focus on improvement. These changes have already resulted in £155,000 savings.
- Audit officers at Ipswich and Suffolk Coastal are now working in partnership to improve services and save money.



Our new look reception

- New focus on customer services with a new customer-friendly reception opened at Melton Hill, improved telephone services and a help desk for planning enquiries.
- Took on at no extra cost the large workload created by the Government's new Licensing rules and its Freedom of Information Act.
- Suffolk Coastal Services Ltd was launched, the new company operating our refuse, recycling, street cleaning and other services, in a partnership with Norfolk County Council that has already won national praise.

## ECONOMY

### Our objectives

- Stimulate a prosperous and sustainable economy in order to improve the quality of life in the community.

### Improvements this year

- New planning guidance was drawn up to ensure that any future development of the Woodbridge Riverside area is appropriate.
- Work is beginning on drawing up a new master plan for the future of Felixstowe with the help of external funding, while we are continuing to update the development rules for the whole district.
- Further improvements to Leiston and Saxmundham town centres thanks to the work of the Single Regeneration Budget partnership that involved Suffolk Coastal, a project which saw £1.7 million being spent in the district.



Council Chairman unfurls beach award

- Felixstowe's South Beach won the Blue Flag for the fifth consecutive year in recognition of its cleanliness, while awards were also given to the rural beaches at Aldeburgh, Sizewell, Thorpeness and The Dip, Felixstowe.
- 70,000 copies of the 2005 Holiday Guide to the district have been published for distribution nationally and internationally. Felixstowe's Tourist Information Centre moved into a new prime seafront position next to the Town Hall.

# SUFFOLK COASTAL'S PERFORMANCE REPORT 2004/2005



## RURAL ISSUES

### Our objectives

- Improve the quality of life for rural communities by focusing on access to services.

### Improvements this year

- Supported the campaign for a proposed new health centre for Saxmundham.
- A record number of over 2,500 attendances were made by local children to the summer activities put on by the Active Leisure team who put on events across the district.
- In partnership with 32 parishes, nearly 8,000 hedges and trees were planted around the district.
- The Council-backed Wickham Market Partnership has sparked £1 million of spending on a range of new facilities and services including a new resource centre and a skatepark.

- Delivered brown wheelie bins so that every home in the district with a garden will from April be able to recycle their garden waste every fortnight.

- Free activity nights for young people in Saxmundham were launched by a partnership including the Council.

- Improvements partly funded by European grants were carried out to footpaths, car parking and street signs in Dennington.



Packing a punch at Saxmundham



Work underway to improve access at Dennington



Hundreds of youngsters scored with Active Leisure last summer

## HOUSING

### Our objectives

- Encourage the improved provision of, and access to, appropriate housing to meet existing and future needs.

### Improvements this year

- Helped encourage 45 more affordable homes to be built this year.
- New planning policies are now awaiting Government backing that would encourage more affordable homes, to rent or buy, being

built in the district to meet urgent local needs.

- The Council linked up with Coastal Homeless Action Group to offer an improved service to homeless people as part of a drive to reduce the human and financial costs of homelessness.

- Dealing with housing benefit claims quicker while identifying and prosecuting more benefit cheats, a success which has gained us extra Government grant to fund more training and improvements.

## COMMUNITY WELL-BEING

### Our objectives

- Protect and promote the well-being of the community in terms of its health, safety, leisure and cultural opportunities.

### Improvements this year

- The district's first anti-social behaviour co-ordinator, Ian Aberly, joined the Council, thanks to funding from the Home Office, and along with Guy Richardson, the community safety officer, is tackling local crime and disorder.
- Successful transfer of the management of the Council's indoor leisure facilities to DC Leisure, securing annual savings of over £200,000 and improved services.

- We trained over 220 workers in local food businesses to meet official food hygiene standards, and inspected over 600 food premises to ensure national hygiene standards are met.

- Drinking bans for public areas in the centres of Woodbridge and Leiston are in the pipeline to give the police extra power to control drunk or disorderly behaviour.

- Our Port Health team at Felixstowe has gained £64,000 additional national funding, and its expertise gained in running this vital service at Britain's busiest port has been shared nationally and across Europe.



Weapons amnesties were held in Woodbridge, Felixstowe and Leiston



Port Health officer carrying out checks



Our leisure centres meet official SAFE criteria

## ENVIRONMENT

### Our objectives

- Protect, improve and make sustainable use of our environment for the people who live, work and visit the area, leaving a rich and diverse legacy for future generations.

### Improvements this year

- We stepped in with £120,000 funding to carry out urgent coastal protection works around Bawdsey after a Government rule change scuppered a long-term protection scheme.

homes receive a fortnightly collection of paper.

- Linked up with other Suffolk councils to offer discounted solar powered hot water systems.
- Taken positive action backed by Government funding to further speed up decisions on planning applications while still protecting the interests of the district.

- Helped gain Anglia in Bloom awards for Felixstowe, Saxmundham, Leiston and Woodbridge.

- Improved cleanliness levels across our district with a five per cent official improvement compared to last year.

- Won the FA Groundsman of the Year award for Suffolk and second place in East Anglia.



School children have been encouraged to recycle old clothes



Wickham Market's new skatepark



There's no sticky wickets thanks to Suffolk Coastal's groundsmen

# SUFFOLK COASTAL'S PERFORMANCE REPORT 2004/2005

## SOME OF OUR PLANNED IMPROVEMENTS FOR THE YEAR FROM APRIL 2005

- A new, more user-friendly website will be available from the spring of 2005. This will enable residents to carry out many day-to-day transactions with us in a convenient, cost-effective way.
- The Council's new leisure card – **coastal card** - will be launched in June giving holders discounts on a variety of leisure activities throughout the district, and will also help those on lower incomes enjoy access to leisure.
- A food premises award scheme is being developed to recognise and accredit food premises that meet and exceed minimum standards.
- 90 new affordable homes should be built in the district as the Council continues to make new homes for local people a priority
- From April, nearly every home with a garden will have a brown wheelie bin for recycling garden waste. This should boost the district's recycling rate to over 33%.
- We will carry on with our programme of improving the district's public toilets, with 16 of the 22 scheduled already upgraded.
- Our partnership with DC Leisure will increase the number of people using the health & fitness facilities at the district's leisure centres.
- We are putting in place a range of measures to tackle the main causes of homelessness, so reducing the human and financial costs of homelessness.
- Drinking bans for public areas in the centres of Woodbridge and Leiston should come into effect, giving police extra powers to deal with anti-social behaviour.
- We're looking at making a significant investment in coast protection works in Felixstowe in partnership with the Environment Agency.
- We are implementing a One-Stop Shop approach, developed in partnership with the Pensions Service and housing associations, for customers claiming benefit.
- We will be providing a new mobile skateboard facility for young people aimed particularly at rural areas, and will press ahead with plans for a permanent one in Woodbridge.

## COMPREHENSIVE PERFORMANCE ASSESSMENT

This year, Suffolk Coastal went through its Comprehensive Performance Assessment (CPA). This is a Government scheme which sees every council in England rated as either excellent, good, fair, weak, or poor. The rating is based on the quality of services a council provides and how likely it is to improve.

Suffolk Coastal was rated as a fair council which is putting in place the building blocks to improve in the future. The CPA identified many strengths in the way that Suffolk Coastal delivers services, for example:

- we are maintaining some good services by increasing efficiency and value for money;
- we are investing in new ways of working with public, private and voluntary partners; and

- we are succeeding in balancing economic growth with protecting the environment.

Alongside this, the report identified a number of areas where it felt Suffolk Coastal could do better:

- we could be clearer about what we want to do in the longer-term, and about the things that are not priorities for the district;
- we could engage more effectively with rural communities; and
- we need to improve our performance on:
  - speed of planning decisions;
  - helping the community minimise growth in refuse;
  - increasing the supply and range of different types of affordable housing.

Although the Council has a number of reservations about the

CPA process – particularly the extent to which it measures value for money – we have drawn up an improvement plan to respond to the weaknesses. This plan will see us:

- survey all the town and parish councils in the district to find out if there are more effective ways of working with them;
- draw up clearer targets for the district in the longer-term;
- review our approach to affordable housing; and
- improve performance across a range of services.

If you would like to know more about Suffolk Coastal's CPA result, the full report is on our website [www.suffolkcoastal.gov.uk/info/cpa.html](http://www.suffolkcoastal.gov.uk/info/cpa.html) or you can contact Paul Byrne on 01394 444435 or e-mail [paul.byrne@suffolkcoastal.gov.uk](mailto:paul.byrne@suffolkcoastal.gov.uk)

- Like all councils, we are required to collect information on how well we are performing - these are called performance indicators, and we review them regularly to ensure that we are looking at ways to improve the services we deliver to our customers.

Full details of how we have performed in 2004/05 will be detailed in our Best Value Performance Plan (BVPP) which will be published no later than June this year.

Early indications show that we have made improvements in the speed in processing housing benefit requests, the percentage of household waste that has been recycled or composted, and the percentage of Council services available electronically or by telephone.

# SCRUTINY IS DOUBLED TO HELP MAKE COUNCIL IMPROVE

Suffolk Coastal now has four Overview and Scrutiny (O&S) Committees drawn up to help ensure that the Council delivers its aims as set out in its innovative Balanced Scorecard.

These new committees are based on the Suffolk Coastal's core themes of Corporate Management, Community Well-being and Rural Issues, Environment & Housing, and Economy and Service Partnerships (the Chairmen of the committees are pictured below).

"It has been difficult to find the appropriate balance and mechanisms to make O&S work but these new arrangements should enable a more constructive and comprehensive approach,"

said Councillor Nigel Barratt who has been appointed Chairman of the Corporate Management Committee and the new Co-ordinating Panel.

"The smaller committees will allow a more informal approach and, with more of the Council's services being delivered by partners, external scrutiny deserves more attention which will be provided by the Service Partnerships Committee.

To support the O & S function, the Council also decided to establish a Co-ordinating Panel made up of the four O & S Chairmen and Vice-Chairmen, to identify key strategic issues facing the Council.

While each committee is responsible for setting its own work programmes, the Panel will ensure that the workloads are appropriate and equitable for all four committees so that resources are utilised effectively and that key issues don't "fall down the gap".

The O&S role is an essential but relatively new part of the democratic process and is designed to provide a counterbalance to the Executive decision-making function. O&S Committees cannot make decisions, but can make recommendations to the Cabinet, Council and officers and could make a significant contribution to ensuring that the Council delivers its stated ambitions.

Of all the Government's new arrangements for local councils, the most difficult to get right has been O&S. Last November it was agreed to increase Suffolk Coastal's O&S committees to four, but with fewer members on each, and aligning them to the Council's priorities as set out in the Balanced Scorecard.

"The committees will hope not to get bogged down in details. The principal aim of O&S is to engage as much of the Council as possible, officers and members, in constructively reviewing our ambitions and strategies and the way in which services are delivered, leading where required to policy and service improvements," added Cllr Barratt.

## KEEPING THE DISTRICT'S STANDARDS

Suffolk Coastal's Standards Committee is responsible for promoting high standards of conduct among those representing their local electorates or working in public services.

The committee is made up of four district councillors, two independent members, and two representatives of the town and parish councils as the committee also helps and advises all the town and parish councils in the district.

The two independent members of the Standards Committee are Kevin Williams of Felixstowe, a retired secondary school headteacher and magistrate, and Clive Strutt of Saxmundham, a former probation officer.

The two representatives of the town and parish councils are John Hum, a parish councillor

from Aldringham-Cum-Thorpe, and Neil Montgomery, a town councillor from Woodbridge, who were both nominated by the Suffolk Association of Local Councils.

The four district councillors on the committee are Peter Bellfield (Conservative), Cliff Cocker (Conservative), Mike Deacon (Labour) and John Kelso (Liberal Democrat). The Chairman of the committee is Kevin Williams.

Anyone with an issue regarding the conduct of a councillor in the Suffolk Coastal district area can raise it with the Council's Monitoring Officer by contacting Hilary Slater on 01394 444336, or email [hilaryslater@suffolkcoastal.gov.uk](mailto:hilaryslater@suffolkcoastal.gov.uk) or its deputy Monitoring Officer Alan Biddle on 01394 444325 or email [alan.biddle@suffolkcoastal.gov.uk](mailto:alan.biddle@suffolkcoastal.gov.uk)



Cllr Nigel Barratt, Corporate Management



Cllr Sir Peter Batho, Community Well-being and Rural Issues



Cllr Sherrie Green, Environment and Housing



Cllr Cyril Fidler, Economic and Service Partnerships

## FEELING SAFE IN SUFFOLK COASTAL

Surveys of local residents are continuing to show that Suffolk Coastal is a relatively safe place to live, with 54% saying they feel very safe, and as much as 95% saying they feel fairly safe or very safe.

A Suffolk Speaks survey of 1,200 residents conducted by MORI returned the above results which saw Suffolk Coastal coming out top for residents feeling safe in the county, while a similar response was also gained by the Council from its own work.

"In our Winter edition of CoastLine we included an eight-page report on the work to tackle crime and disorder in the district and asked people to fill in a detailed questionnaire. I would like to thank everyone who took the time to take part as it will help us and our partners plan for the future," said Councillor Patricia O'Brien, Cabinet Member for Community Safety and Chair of the Suffolk Coastal Crime and Disorder Reduction Partnership.

Respondents were asked to rank crime and disorder issues in order of importance, and their experience of crime. Over 415 replies were received.

A third, 33.7%, ranked violent crime as their area of greatest concern, and 39.2% felt that domestic burglary was the most important issue for the Partnership to address.

These were followed by public disorder/nuisance, drugs offences and criminal damage, with theft, cycle crime and vehicle crime seen as the least important.

The most frequently cited types of anti-social behaviour were swearing/intimidation/loutish

behaviour (47.6%) followed by damage to property/graffiti/vandalism (25.4%).

For 53.8% drug misuse was a concern in the town or village where they lived, with most respondents believing alcohol (80%) and cannabis (30%) to be the biggest issues. 60% of respondents had seen signs of drug/alcohol misuse in their area. The majority cited drunkenness (70%), or under-age drinking (57.8%), as the behaviour witnessed.

The same questionnaire was also given to 100 local secondary school students to gain a perspective from young people. Violent crime was their main area of greatest concern (27.7%) and 21.8% with domestic burglary second, followed by racial harassment, domestic violence, and drugs offences. They were least concerned about cycle crime and public disorder/nuisance.

Their most frequently cited response to what was anti-social behaviour was violence (21.8%) followed by drunkenness (20.8%). Nearly one in three (31.7%) felt that drug misuse was a concern in the town or village where they lived, with most respondents believing alcohol (81.3%) and cannabis (37.5%) to be the biggest issues.

Over half (55.4%) had seen signs of drug/alcohol misuse in their area, with the majority citing drunkenness (69.6%), or under-age drinking (53.6%), as the behaviour witnessed.

In the next edition of CoastLine we will explain how the consultation has affected the Partnership's strategy for reducing crime and disorder.

## BUGLE SOUNDS FIRST POST FOR HOLIDAY GUIDE



Councillor Hawkins receives a special delivery

The 2005 Suffolk Coast Holiday Guide was launched at Landguard Fort, Felixstowe when a bugler on the ramparts heralded a 17th Century English Marine handing the first copy to the Chairman of Suffolk Coastal, Councillor Trevor Hawkins.

"There is always a massive demand for the Guide and consequent interest in Suffolk Coastal as a holiday area. Copies are sent literally

all over the world and can also be seen on our website. More people than ever are finding out that Suffolk Coastal is a great area to visit," said Councillor John Perry, Cabinet Member for Economy and Tourism.

Landguard Fort, Felixstowe was the site of the last major invasion of England by a foreign power and the first land battle for English Marines on July 2, 1667.

## GROUP WORKING TO KEEP WOODBRIDGE SAFE

A partnership working to reduce crime and disorder in Woodbridge has restated that there are many initiatives underway helping to keep the town a safe place to live and visit.

Suffolk Coastal was recently officially revealed to be one of the ten safest districts in England and Wales based on comparisons of five of the most significant crimes.

"The Woodbridge Local Implementation Group is confident that measures being taken by the police and other partners will help resolve a recent spate of petty vandalism. These include the Nightsafe project, the proposed ban on drinking alcohol in public areas in the town centre, plus the use of anti-social behaviour orders, and dispersal orders", said Councillor

Nigel Barratt, Chairman of the Woodbridge LIG, part of Suffolk Coastal's Crime and Disorder Reduction Partnership.

"Obviously, we could always do with more officers out on the beat, but I would commend the police who are doing all they can with their existing resources. We are reviewing once again the possible costs and funding sources for installing CCTV cameras in the town centre, which could be another useful tool," added Cllr Barratt.

The Woodbridge LIG contains representatives from the police, Suffolk Coastal, Woodbridge Town Council, community education, the drug action team, and a number of local voluntary organisations. There are also LIGs in Felixstowe and Leiston.

## SORTING OUT RECYCLING



The Sort It for Suffolk team say recycle in all weathers!

The Government-funded Sort It for Suffolk team is busy calling at over 25,000 homes in Suffolk Coastal to encourage even more people to get into the recycling habit.

"We are hoping that this personal approach will encourage even more people to get into the recycling habit and so cut down the amount of waste that is being

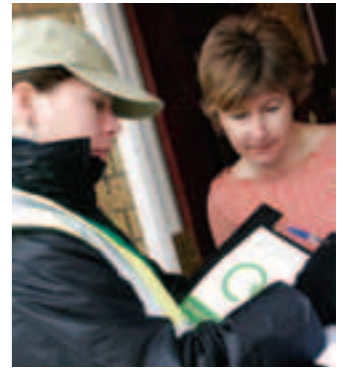
dumped into a landfill site. It is very much a two-way process with the team feeding back suggestions from residents about our recycling services," said Councillor Andrew Nunn, Cabinet Member for the Environment Natural and Built.

"We have received Government funding to help buy wheelie bins, green crates and specially adapted refuse freighters, but we have also had to back it up with a considerable financial commitment.

"Recycling is an expensive business and it is frustrating that largely because of external pressures on our budget we are not yet in a position to widen our fortnightly collections to other

materials such as plastics, glass or cans that residents might want," added Councillor Nunn.

The recycling advisers can visit community groups at local village halls or other similar venues to run group discussion sessions - contact 01394 444000 to arrange a visit.



## PLANNING FELIXSTOWE'S FUTURE



Work is now underway on drawing up a long-term vision for the regeneration and future of Felixstowe with all parts of the community set to have their say over the next few months.

Suffolk Coastal and the Haven Gateway Partnership have linked up to successfully gain a major grant from the East of England Development Agency (EEDA) to help fund the project.

"A consultant has been appointed who has six months to produce a

draft master plan for Felixstowe, a blueprint for residents, businesses and potential newcomers alike on how this town should develop in the future," said Councillor Andy Smith, Deputy Leader of the Council and Cabinet Member for Planning.

Four areas will be the principle focus of the study, with the spotlight concentrating on:

- the town centre and access to it from both the A14 and the seafront area,

- the seaside/resort area
- the port and adjacent area
- the wider residential area, and its relationship with the countryside and the Trimleys.

The project will give an appraisal of the area in terms of its environmental quality, how it copes with traffic, the potential for regeneration, redevelopment and new development, and a view on the services on offer in the town.

"To set up this project has been a partnership, with funding from

EEDA, English Partnerships, Felixstowe Town Council and this Council. For it to be successful, it is vital that all parts of the community put their views on the future of their town.

"We expect to end up with an independent and expert analysis of the challenges and conflicts facing the town, issues such as port and resort, conservation and growth.

"The final document should be incorporated in time into local and regional planning policies, setting out for all to see the vision of how Felixstowe expects to develop as a community over the next 10 or so years," added Councillor Smith.

The contract was awarded to David Lock Associates of Milton Keynes, a leading town planning and urban design consultancy who state they bring 'experience, skills and creative solutions to most complex development planning issues'. There will be more details over the coming weeks on how people can have their say.

# SUFFOLK COASTAL READY FOR THE LICENSING ACT



Pubs are just one of the premises covered by the new Licensing Act

The Licensing Act 2003 made the headlines because it gives pubs the chance of being open 24 hours, seven days a week, but more significantly for local people it also gives them a more direct say.

The Act brings together the six previous licensing systems that control everything from clubs to village halls – rules governing the drinking of alcohol, dancing and live music, theatre or cinema. Some of these were handled by Magistrates but they are all being transferred to the Council.

“This is a massive shift of responsibility by the Government and we estimate that it will cost an extra £100,000 in the next 12 months. It will mean that local people will have a more direct say in controlling the behaviour of their nearby clubs, pubs, halls and other licensed premises. The new law also makes it clear for the first time that premises have a major duty in controlling crime and disorder,” said Cllr Norman Bugg, Chairman of the Licensing Committee.

There are over 600 licensed premises in the district, and probably over 1,000 people who will want to hold the new personal licence enabling them to authorise the sale of alcohol.

The full details can be found on the Council’s website on

<http://suffolkcoastal.gov.uk/services/licensing.html> but the basic rules are that all premises providing a licensable activity, including selling alcohol, need a licence. There are two classes of premises licence – one covers places where alcohol is sold to the public such as pubs, restaurants, and supermarkets, while the other covers those where alcohol is supplied in private members’ clubs.

If these premises are already licensed and do not want to make any changes to the way they currently operate, they can just convert to one of the new licences.

However, if they want to extend their opening hours or perhaps add to their range of activities, the applicant must then draw up an operating schedule. This must include their proposed opening hours and show how they will comply with the Government’s objectives laid down in the Act. These are the prevention of crime and disorder, the prevention of public nuisance, ensuring public safety, and protection of children from harm.

Once they have made a formal application to the Council’s licensing team, they must also advertise in a local publication and at their premises, giving anyone in the vicinity 28 days to respond to the application and have their say,

Statutory organisations such as the police, the fire brigade, Suffolk Coastal’s planning officers, food, safety and environmental protection teams, as well as trading standards officers, will all be sent copies of every formal application. All the details will also be on the Council’s website.

If no representation is made against the application, then the licence will be granted as requested. If objections are raised to the application, the licensing team will try to resolve any issues. If the negotiations do not result in the representations being withdrawn a hearing will be held when a Sub-Committee of the Licensing Committee will weigh up all the representations and evidence before making its decision.

Once granted, a licence will remain in force for the lifetime of the business. Application can be



### The operating schedule must include the following information:

- The licensing activities to be carried out
- The proposed hours that the relevant licensable activities are to take place
- The proposed hours that the premises are to be open to the public
- The duration of the licence (if it is to have a fixed term)
- Details of who is to be the designated premises supervisor if the licensable activities include the supply of alcohol
- Where alcohol is to be supplied, whether the supplies are proposed to be for consumption on and/or off the premises, and
- A statement of the steps the applicant proposed to take to promote the licensing objectives (for example, the arrangements for door security to prevent crime and disorder).

made for it to be varied and, if statutory organisations or people living nearby find that the premises are causing disorder, they may ask for it to be reviewed.

However, during this year’s transition period the Government is giving councils only two months from the initial application to reach a decision. If we do not meet the deadline, the application is automatically rejected but the applicant can appeal to the Magistrates’ Court. They, or any of the complainants, can also appeal to the Court if they do not like the Council’s decision.

There is a completely different system for anyone who wants a personal licence – they will automatically get one if they are already ‘the name above the door’ at the licensed premises. New applicants will have to pass a test covering licensing issues, and be subject to a check for previous criminal convictions.

This personal licence is for the named individual, lasts for 10 years, costs £37 and covers all of England and Wales. It does not mean that they have to be on the premises at all times, and they may or may not be the designated premises supervisor (DPS) who is responsible for what goes on there. The DPS has the duty of ensuring the premises is run in accordance with its operating schedule.

# INSPECTOR TO DECIDE ON AFFORDABLE HOMES POLICY

The fate of Suffolk Coastal’s attempts to increase the amount of affordable housing to tackle the problem of local people unable to find a suitable home in their town or village rests with a Government-appointed planning inspector:

A special Planning Inquiry called by the Inspector, Geoff Salter, was due to begin on Tuesday, March 15, at the Council Offices, Melton Hill with the Council defending its new, creative policies to address the district’s problems.

Government planning guidance now gives local councils the power to insist that developers help meet demonstrated local needs. However, the Government and the County Council have objected to Suffolk Coastal’s proposed changes to its Local Plan. The remaining objectors are dominated by the house building industry.

“To help meet the increasingly urgent local demand for affordable housing, we have proposed that one in three of all new homes in developments of three houses or more in villages, or six or more in towns, should be affordable housing. This is a significant increase from our present planning policy and will mean some considerable changes for developers,” said Councillor Andy Smith, Cabinet Member for Planning.

A housing survey revealed that 484 new affordable homes a year were required to meet local demand, with a particular need for rented housing. Most new homes have been targeted at people already on the rungs of the housing ladder.

A copy of Suffolk Coastal’s Second Alteration to the Local Plan – Affordable Housing, can be found on [www.suffolkcoastal.gov.uk](http://www.suffolkcoastal.gov.uk)

# HAVE YOUR SAY ON COASTAL DEFENCES

Exhibitions are being held in Felixstowe so people can find out all about and give their views on the latest proposals for how to defend the coastline of the town.

Consultants have been drawing up reports on behalf of Suffolk Coastal and the Environment Agency, which set out how the stated policy of ‘hold the line’ can be achieved.

“It is the agreed view of both ourselves and the Environment Agency, which has been accepted by the Government, that the existing line between the sea and the land in Felixstowe should be maintained,” said Cllr Andy Smith, Deputy Leader of the Council and Cabinet Member responsible for Coastal Management.

The Felixstowe coastline has three distinct zones and three different studies have been undertaken to assess what needs to be done in each.

The defences in North Felixstowe are relatively new. The suggested coastal defence strategy for this zone (from the Golf course to Jacob’s Ladder) is being produced by Royal Haskoning. They recommend increased monitoring, maintaining and when it becomes necessary in the future, improving these existing defences. Improvements would include using rock to strengthen the seaward end of the existing groynes and to help hold a higher beach. Some replenishing of the beach with dredged sand and gravel may also be required to achieve this aim. A timescale of work in five to ten years time is anticipated.

The central coastal defence strategy is being produced by the Halcrow Group, covering the area between Jacob’s Ladder and the War Memorial near the Town Hall. The recommendations for this frontage include modifications to



Have timber groynes had their day?

the Cobbolds Point defences, replacement of the existing concrete groynes with rock ‘fishtail’ groynes and recharge with dredged material to again help retain a higher beach

The southern section stretches from The War memorial to Landguard Point. Halcrows produced a strategy in 2003 which recommended rock fishtail groynes and/or offshore reefs. Black and Veatch have picked up the baton and have been looking at these and other options (timber groynes and straight rock groynes) with a view to starting work on the replacement of the existing concrete groynes in the Spring/Summer of 2006.

The work being undertaken by Black and Veatch is likely to be ready for public viewing/comment around May 2005

A key aspect of all the current work, is the recommendation of the use of rock in the defences, instead of traditional timber. The studies have independently

concluded that the beaches have been ‘lowering’ because material has been moving offshore. Rock fishtail groynes are proven to be more effective at combating this offshore movement, hence the recommendation for their use. The most effective defence against erosion is a healthy beach. The advice the Council is receiving is that the most effective way to maintain a healthy beach is to use rock fishtail groynes.

The Council is aware that many people are not in favour of the use of rock on local beaches. Officers are therefore working with the consultants to help devise ways of mitigating these concerns, possible by devising hybrid solutions involving the use of timber at the landward end of the new structures, in order to gain the best of both types of defence.

If you would like to find out more contact Ken Gordon either by email [ken.gordon@suffolkcoastal.gov.uk](mailto:ken.gordon@suffolkcoastal.gov.uk) or by telephone on 01394 444226.

# LOCAL PERFORMERS TAKE CENTRE STAGE



Conductor Patrick Bailey helped lead Suffolk Coastal in Concert's celebration of local musical talents

The spotlight shone in February on nearly 200 local singers and musicians during an exciting weekend of live music at Snape Maltings Concert Hall.

Suffolk Coastal in Concert gave amateur and lapsed musicians the once in a lifetime opportunity to take to the world-famous stage at the Maltings in the company of professionals from the English Sinfonia.

"The Suffolk Coastal in Concert initiative has been a really stimulating partnership bringing together the knowledge and expertise of professionals with the enthusiasm and excitement of local amateurs. It promises to be a big boost for local musical and arts groups," said Councillor Doreen Savage, Cabinet Member for Customers and Partners.

The idea was sparked by the desire of local music groups to work with a professional orchestra at a major venue. The event was made possible by the financial support of the Arts Council England East and the Eastern Orchestral Board, and it



attracted over 70 orchestral players and 100 singers.

There was an orchestral concert featuring pieces by Mozart, Dvorak, Arnold and noted local composer Elis Pehkonen, with the following Sunday evening the full professional orchestra accompanying the choral singers in a programme that included works by Britten, Jana Rowland, Copland and Bernstein.

The Saturday morning saw a "live performance" by a 'scratch orchestra' when members of the English Sinfonia were joined by residents who had not played an instrument since schooldays and who will hopefully be inspired to take up playing on a regular basis.



## CHARITY JAZZ CONCERT

The Rotary Club of Ipswich Wolsey is presenting a Celebration of Jazz at Snape Maltings Concert Hall on Saturday April 30 at 7.45pm in aid of EACH – East Anglia's Children's Hospices and other local charities.

On stage will be the Horn Factory, Bob Bromhead Trio, and Polly Gibbons, with tickets costing £12.50, £15.00 & £17.50 available from Manning & Girling on 01473 259984 or the Box Office on 01728 687110.